

FOR HIGHER PRESSURES AND OTHERS PORTS CONNECTIONS PLEASE CONSULT

ORDER EXAMPLE: U250 A02 V 2 AI
 Capacity; 25 litres
 A02≡20 bar Body & insert material: AISI316L
 V=FKM rubber bladder 2 port connections

A04≡40BAR
 A03≡30BAR
 A02≡20BAR

PULSATION DAMPER REF.	VOLUME (litres)	DESIGN PRESSURE (bar @ 50°C)	D (mm)	L (mm)	ANSI flange 150#	d (mm)
U015	1.5	40	25	315	1"	25
U030	2.6	30	50	370	1-1/2"	50
U060	5.6	40		528	2-1/2"	
U100	10.4	30	100	585	4"	80
U150	15			798		
U250	25	20	150	875	6"	100

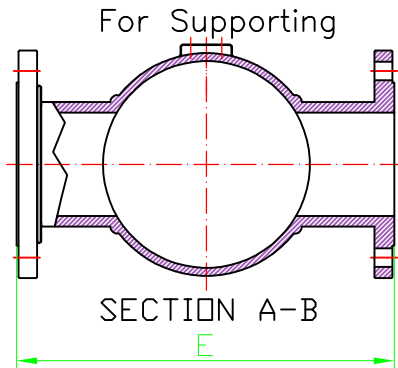
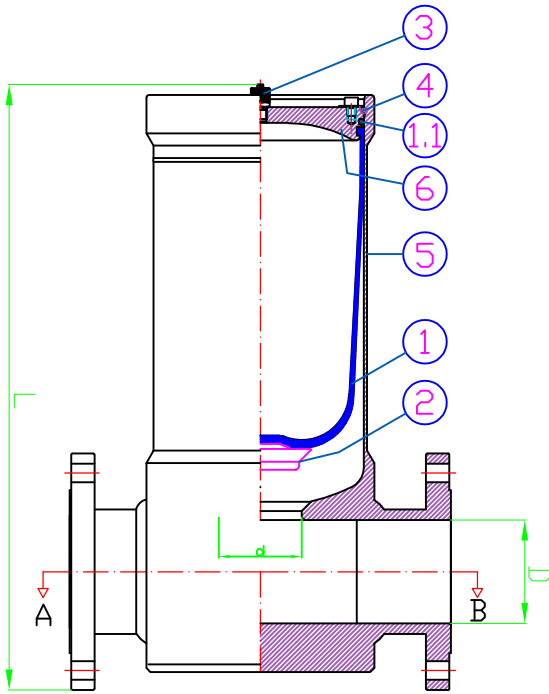
BLADDER RUBBERS N=NITRILE, B= BUTYL E=EPDM, V=FKM	N	B	E	V
RUBBERS MAX.WORKING TEMPERATURES (°C)	+80 -15	+100 -30	+130 -30	+200 -20

CHARGING WITH GAS, AND MOUNTING POSITION: VERTICAL, VALVE ③ UP

THE MAX. WORKING TEMPERATURES VALUES CAN BE REDUCED DEPENDING UPON THE LIQUID IN CONTACT AND TIME OPERATION

Nº	DENOMINATION	QT.	MATERIALS
6	COVER	1	AISI 316L
5	BODY	1	AISI 316L
4	RETAINING RING	1	DIN17224 (AISI 316)
3	CHARGING VALVE	1	AISI 316L (1/4"Gas)
2	INSERT	1	AISI 316L
1.1	□- RING	1	NBR, BUTYL, EPDM & FKM
1	BLADDER	1	NBR, BUTYL, EPDM & FKM

TOLERANCES:
 EXTERNAL DIMENSIONS: ±2%
 VOLUME: ±1.5%



WORKING TEMPERATURES VERSUS WORKING PRESSURES **

FOR A TEMPERATURE OF	80°C	100°C	130°C	200°C	CORRESPOND THE W.P.DESIGN
"	"	"	"	"	x 0,87
"	"	"	"	"	x 0,82
"	"	"	"	"	x 0,78
"	"	"	"	"	x 0,68

** wall thickness calculation according to EN 14359 code
 * Hydrostatic test pressure @ 1.5 * Design pressure @ 20°C



HIDRACAR SA
 08243 MANRESA (Barcelona) SPAIN
 TEL.34.93.8330252
 e-mail: hidracar@hidracar.com

Application: Mainly in Suction and Discharge side of Dossing Pumps

Title: BLADDER IN LINE S.S.LOW PRESSURE PULSATION DAMPERS

Drawn	Approved
	M.Carcaré
Rev.	Date
1	13.09.19