

Information Sheet

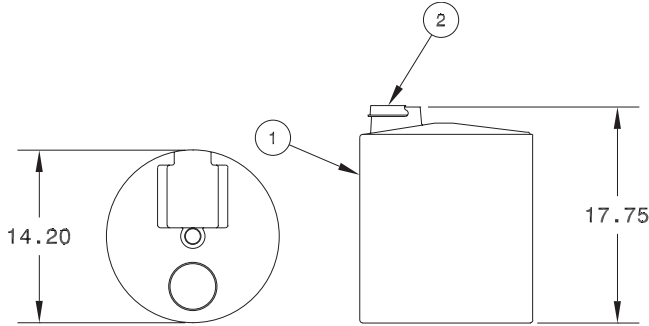
Polyethylene Tank Assemblies



NO. 27421

10 GALLON TANK ASSEMBLY

- Ultraviolet resistant, yellow polyethylene tank.
- Molded recesses for mounting of any LMI Series A, J, or P pump.
- Convenient and light weight, ships economically.
- Large fill hole at top allows easy replenishing of solution.
- Slightly translucent yet rugged design allows checking solution level at a glance.



Model No. 27421 Tank Assembly
(Pump must be ordered separately.)

Shipping Weight: 7 lbs (3.2 kg)

NOTES:

1. Full, flat bottom support required.
2. Maximum solution/ambient temperature 110° F (43° C).
3. Minimum solution/ambient temperature 0° F (-18° C).
4. Not suitable for use with slurries, concentrated organic solvents, oils and related materials.



**AGITATOR
NO. 27591**

115 VAC, 50/60 Hz, 1.5 amp, 175 watts,
1/20 HP. 27" S.S. shaft with S.S. impeller
and resistant coating.



**LIQUID LEVEL SWITCH
NO. 27417**

115 VAC, 50/60 Hz, max load: 3 amps.
Glass fiber reinforced polypropylene housing.
Polypropylene float. Connections for pump
and low-level signal device.



201 Ivyland Road
Ivyland, PA 18974 USA
TEL: (215) 293-0401
FAX: (215) 293-0445
<http://www.lmipumps.com>

Instruction Sheet

35 Gallon Polyethylene Tank Assembly

Model No. 27400

NOTE:

- (a) *LMI Model No. 27400 comes with the combination drain valve and pump suction connection disassembled.*
- (b) *Full, flat bottom support is required.*
-

1. Wrap Teflon[®] tape or apply pipe thread compound to the threads of the nipple at the rear of the drain valve.
2. Thread the valve into the drain port of the tank. Hand tighten enough to prevent leakage or apply a 7/8" open end wrench to the hex nut behind the valve knob. Leave the valve with its branch pointing up toward the pump shelf.
3. Choose correct size tubing connector for your LMI pump's tubing. Wrap Teflon[®] tape or apply pipe thread compound to the 1/4" NPT male pipe threads of the connector.
4. Thread connector onto the vertical branch of the gray PVC drain valve. It may be necessary to apply a 13/16" open end wrench to the hexagonal portion of the connector to fully tighten this fitting.
5. Unpack the LMI Series A or Series P pump which will be used with your tank assembly. Remove the coupling nut from the tubing connection at the suction side (bottom) of the pump head.
6. Cut a short length of suction tubing (about 5" [12.5 cm] long). Install this tubing on the pump's suction connection as instructed in the pump's instruction manual.
7. Apply Velcro[®] strip halves to the pump bottom and tank shelf checking to be sure that spacing is the same on the pump as on shelf.
8. Slide white tubing coupling nut onto the tubing with threads pointing downward.
9. Set the pump on the tank shelf with the short length of suction tubing inserted into the white connector in the drain valve. Check that the tubing is long enough that it seats fully in the socket.



Model No. 27400 Tank Assembly

10. Remove the black foam rubber tubing retainer from the vertical groove in the tank. Insert the discharge tubing through the center hole of this retainer. Connect the discharge tubing to the discharge side of the pump head as instructed in the pump's instruction manual. Hand tighten coupling nut.
11. Fill tank with approximately 6" (13 cm) of water and check all connection points for leakage. Tighten connections where necessary.
12. When all connections are tight, remove water from tank and fill with solution to be pumped.

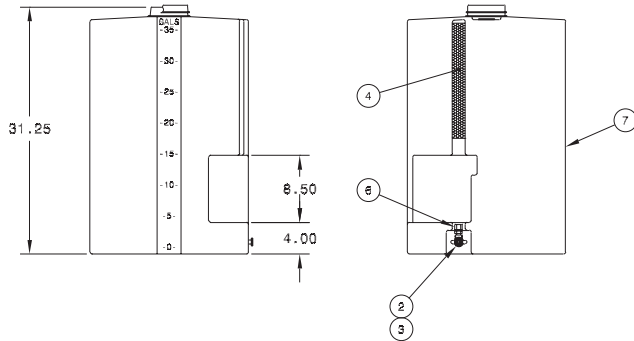
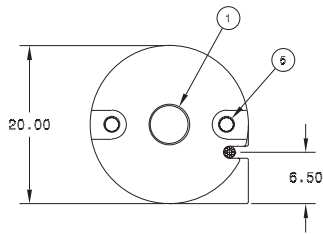


201 Ivyland Road
Ivyland, PA 18974 USA
TEL: (215) 293-0401
FAX: (215) 293-0445
<http://www.lmipumps.com>

No. 27400

35 Gallon Tank Assembly

- Ultraviolet resistant, yellow polyethylene tank with recess for mounting of any LMI Series A, P, or J pump.
- Fitted for mounting of agitator and liquid level switch.
- Provides an economical, all-in-one flooded suction installation. Less to assemble, less to maintain.
- Shut off valve, discharge tubing retainer and large upper fill hole complete this unique design.
- 5 gallon graduations. 20 liter graduations.
- Suitable for most corrosive and non-corrosive solutions.



Model No. 27400 Tank Assembly
(Pump must be ordered separately.)

NOTES:

1. Full, flat bottom support required.
2. Maximum solution/ambient temperature 110° F (43° C).
3. Minimum solution/ambient temperature 0° F (-18° C).
4. Not suitable for use with slurries, concentrated organic solvents, oils and related materials.

COMPONENT PARTS

Model 27400 Tank Assembly

Ref No.	Part No.	Description	Qty
1	27039	Capplug, PE, large	1
2	27300	Valve, 1/4" PVC	1
3*	10482	Fitting, 3/8", 1/4" NPT PP	1
3*	27397	Fitting, 1/4", 1/4" NPT PP	1
4	27398-1	Retainer, Tube	1
5	10346	Capplug, PE, small	2
6	27401	Nipple, 1/4" PVC	1
7	27325	Tank, 35 Gallon PE	1
8	27903	Velcro®	2

Shipping Weight: 18 lbs (8.2 kg)

*Two fittings are supplied with each tank assembly for connection to either 3/8" OD or 1/4" OD tubing.

Information Sheet

Polyethylene Tank and Cover Assembly and Accessories

MODEL NO. 26350 50 GALLON TANK ASSEMBLY

- Ultraviolet resistant, molded yellow polyethylene tank.
- High rigidity black polyethylene cover with molded recess for mounting of pump, agitator* and liquid level switch.
- 5 gallon (20 liter) graduations
- Self supporting, tapered sides.
- Suitable for most corrosive and noncorrosive solutions.
- Can be nested up to four (4) per carton for shipping economy.

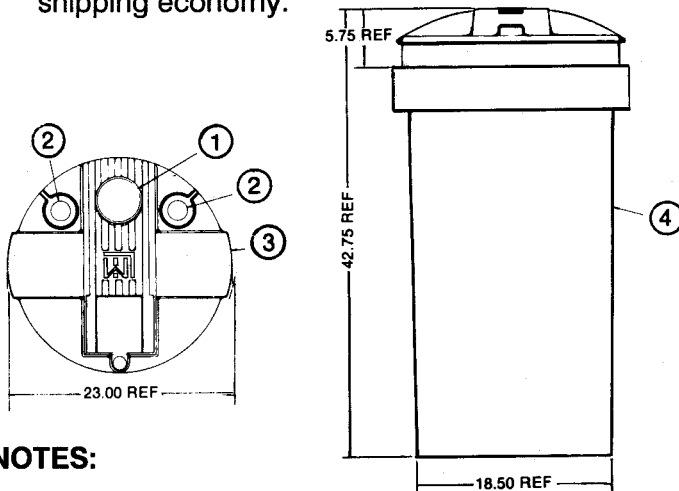


Model No. 26350

COMPONENT PARTS

Ref No.	Part No.	Description	Qty
1	25985	Caplug Assembly Black Polyethylene	1
2	10346	Caplug Assembly Black Polyethylene	2
3*	26637	Cover, Black Polyethylene	1
4	25688	Tank, 50 Gallon Yellow Polyethylene	1

Shipping wt. 25 lbs (11.4 kg)



NOTES:

1. Full, flat bottom support required.
2. Maximum solution/ambient temperature 110°F (43°C)
3. Minimum solution/ambient temperature 0°F (-18°C)
4. Maximum weight limit for cover 50 lbs (23 kg)
5. Not suitable for use with concentrated organic solvents, oils and related materials.

**Cover must be drilled at factory for agitator mounting.
Please indicate your desire for this option when ordering.*



8 Post Office Square
Acton, MA 01720 USA
TEL: (978) 263-9800
FAX: (978) 264-9172
<http://www.lmipumps.com>



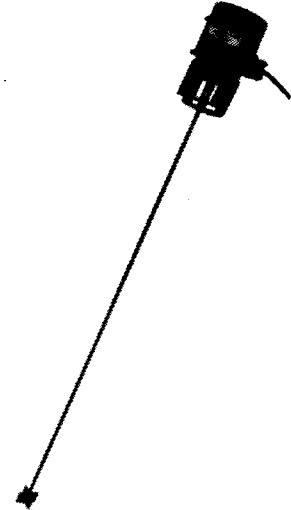
Replaces same of Rev. C 6/96
1057.D 3/97

AGITATORS WITH SUCTION TUBE SHIELD

115V Model	Shaft Length	Impeller	Motor
No. 10590	34" S.S. +	303 S.S.+	1600 RPM, 115 VAC, 50/60 Hz., 1.5 AMP. 175 WATTS, 1/20 H.P.
No. 10592	34" S.S. +	Neoprene**	
No. 27591	27" S.S. +	303 S.S.+	

220V Model	Shaft Length	Impeller	Motor
No. 25290	34" S.S.+	303 S.S.+	1600 RPM, 220-240 VAC, 50 Hz., .75 AMP. 175 WATTS 1/20 H.P. DIN Plug
No. 25292	34" S.S.+	Neoprene**	
No. 34504	27" S.S.+	303 S.S.+	

- + *Epoxy chemical resistant coating.*
 ** *Has bronze hub for noncorrosive abrasive slurries only.*



LIQUID LEVEL SWITCH MODEL NO. 26731

- Corrosion resistant housing of glass - fiber, reinforced polypropylene.
- Chemical resistant polypropylene float.
- Receptacles for connection to metering pump and low level signal device (alarm).
- Convenient mounting on an LMI 50 gallon tank with cover assembly.
- Electrical: Voltage 115 VAC, 50/60 Hz. Max Load: 3 Amps. Also available in 230 VAC, (Model No. 26732).